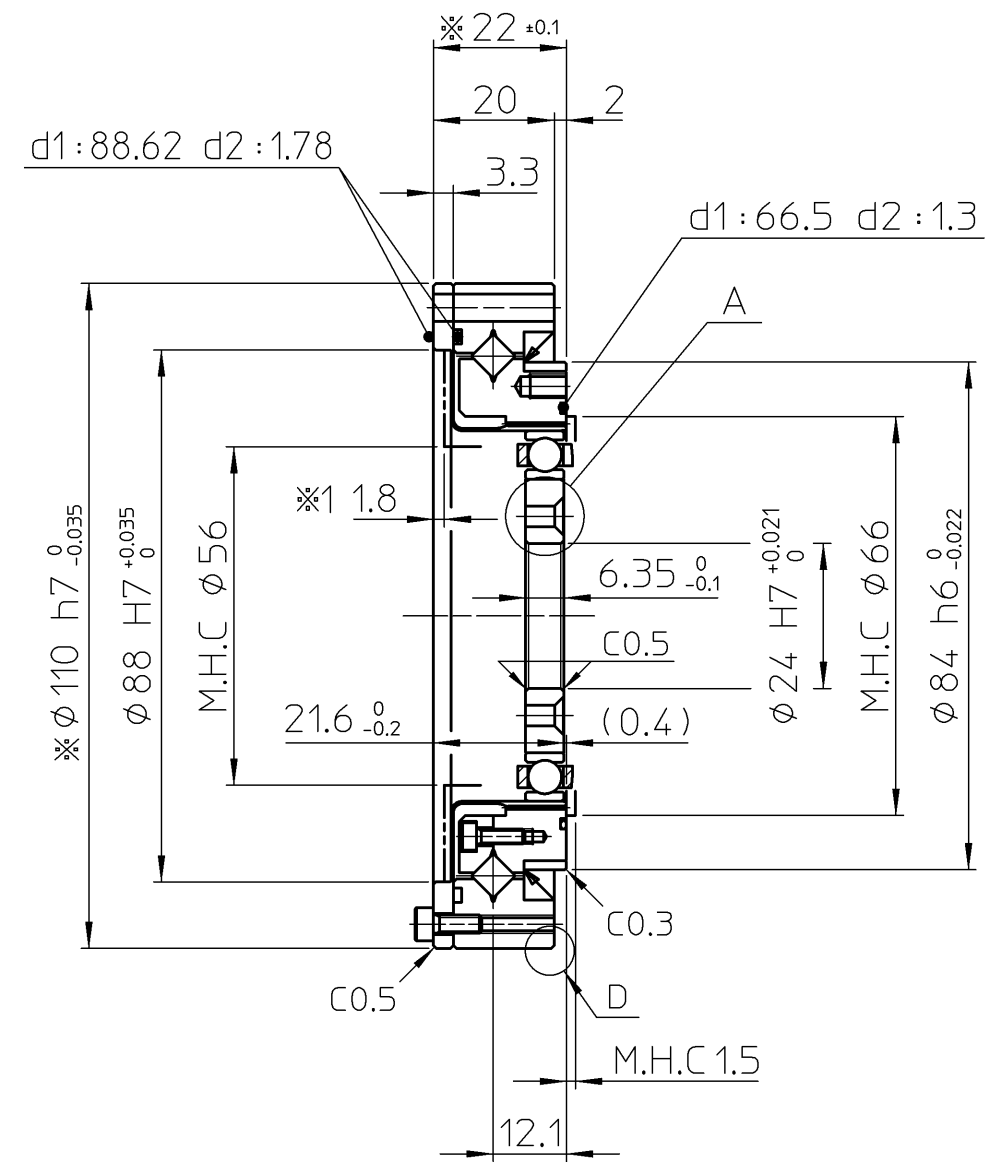
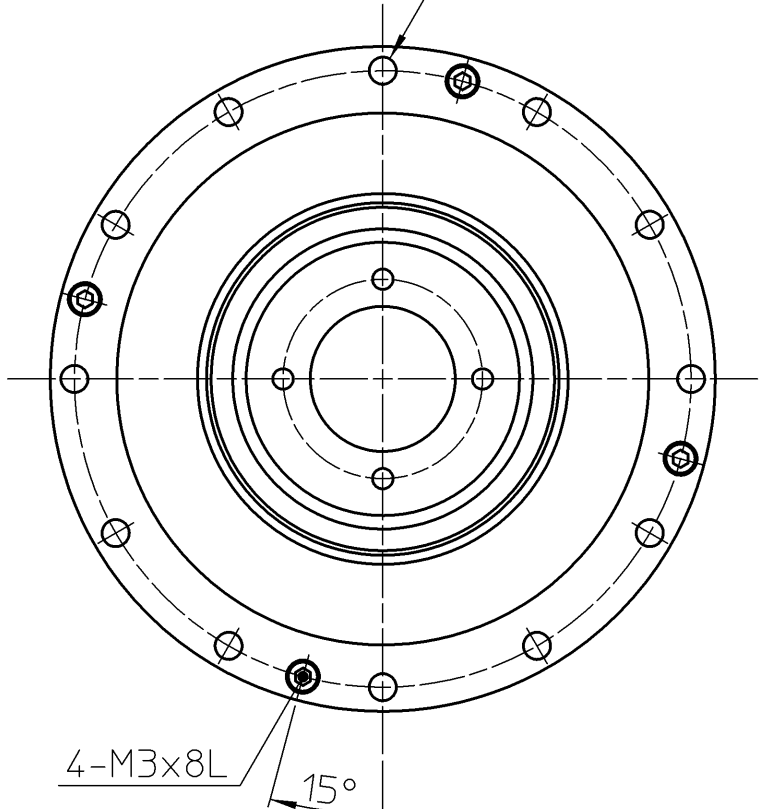
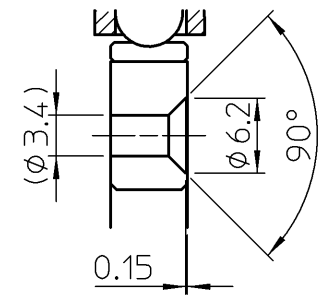
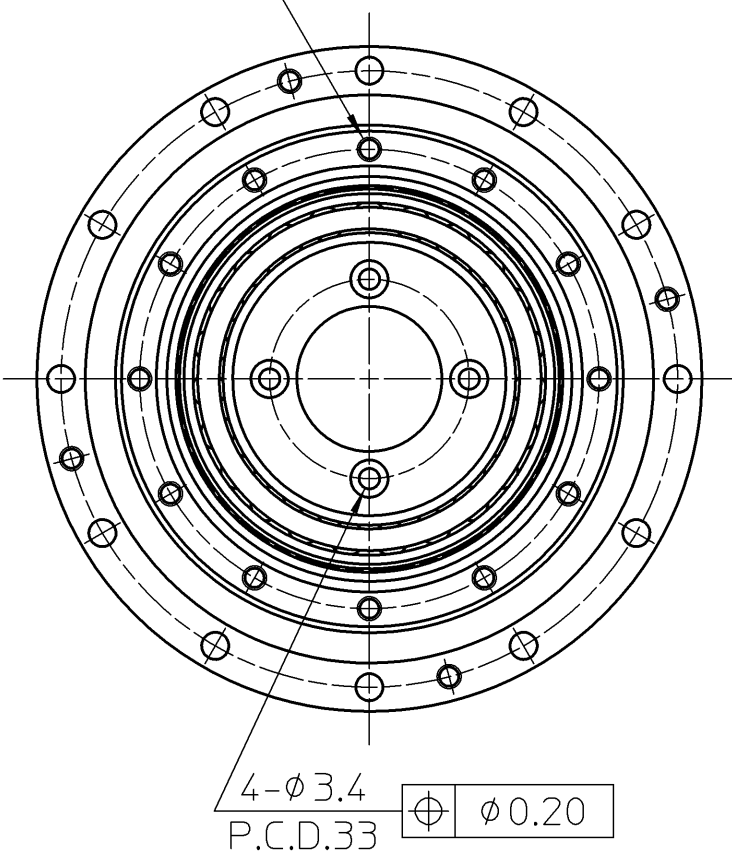


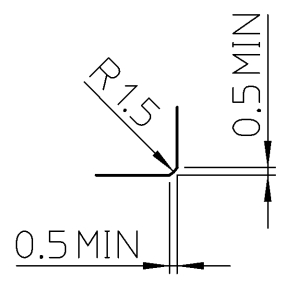
⊕ φ0.25 12-φ4.5  
P.C.D.102



12-M4x6 ⊕ φ0.25  
P.C.D.76



DETAIL A



DETAIL D

REMARKS

- Lubrication : HarmonicDrive® Gear HarmonicGrease® SK-1A  
Cross Roller Bearing HarmonicGrease® 4B No.2  
Please lubricate inside the Flexspline and the Wave Generator at assembly
- A dimension indicating ※ is the value of near bolt tentatively mounted.
- Flexspline and Cross roller bearing are tentatively fixed at shipment.
- ※1 = Maximum centering location.
- M.H.C=Minimum Housing Clearance
- Designing and/or Handling of HarmonicDrive® Gears(HarmonicDrive® Actuators) has to Comply with technical information shown in HarmonicDrive® Catalog
- Registered Trademarks in Japan.

|                      |
|----------------------|
| CUSTOMER DRAWING NO. |
|                      |
|                      |
|                      |
|                      |

**PROPRIETORSHIP**  
This drawing (document) is the **PROPERTY** of Harmonic Drive Systems, Inc. and shall not be traced, otherwise copied or used for purposes other than agreed upon, nor communicated to any third party without written permission of Harmonic Drive Systems, Inc.

| ENCLOSED IN THE BOX |                  |
|---------------------|------------------|
| O-ring              | d1:88.62 d2:1.78 |
| O-ring              | d1:66.5 d2:1.3   |
|                     |                  |
|                     |                  |

|   |  |              |           |  |              |                   |     |
|---|--|--------------|-----------|--|--------------|-------------------|-----|
| 訂正<br>REV   | 来歴<br>DESCRIPTION  | 設計<br>DESIGN | T.Wada    | Jul- 8-'14                               | タイトル TITLE   | ASSEMBLY DRAWING  |     |
| 仕様<br>SPEC  | C1   | 検図<br>VRFD   | S.Momose  | Jul- 8-'14                               | 製品名 ARTICLE  | SHD-25-160-2SH-SP |     |
| 機械加工無記号公差<br>GENERAL TOLERANCE  | 0 0.5 6 30 120 315 1000 2000<br>0.5 6 30 120 315 1000 2000 | 承認<br>APPD   | E.KIDOOKA | Jul- 8-'14                               | 図番<br>DWG No | C2A6710 -         |     |
| 備考<br>REMARKS   | 特記無き角はCO.2以下、すみの丸みはRO.4以下                                  | DWG SIZE     | A3        | UNIT                                     | mm           | THIRD ANG         | ⊕ ⊖ |
| 無記号表面アラス  | 50S 25S 6.3S   | SCALE        | 1:1.25    | HARMONIC DRIVE SYSTEMS   INC TOKYO JAPAN |              |                   |     |
| 本図は(株)ハーモニック・ドライブ・システムズの所有に係わるものです。許可なく第三者に見せたり、トレースその他の複写及び指定された用途以外には使用しないで下さい。 |  |              |           |  |              |                   |     |